

「182mm mono TOPCon half-cell, high-efficiency monocrystalline module」

**430-450W** 0-5W Positive Tolerance



**MBB&SMBB Half-cut Cell Technology**

New circuit design, lower internal current, and lower Rs loss.



**High Power Density**

A new generation of monocrystalline products with reduced resistive losses for greater power output.



**Mechanical Properties**

An aluminum frame in special design for better mechanical properties and more efficient installation.



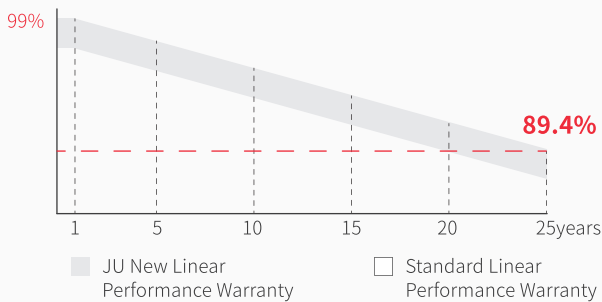
**Excellent Weather Resistance**

The solar modules can meet the IEC standard requirements with strong resistant to risks such as salt spray, ammonia gas, dust, snail marks and electric potential induced attenuation.



**4 Times 100% EL Detection**

Guarantee no micro cracks



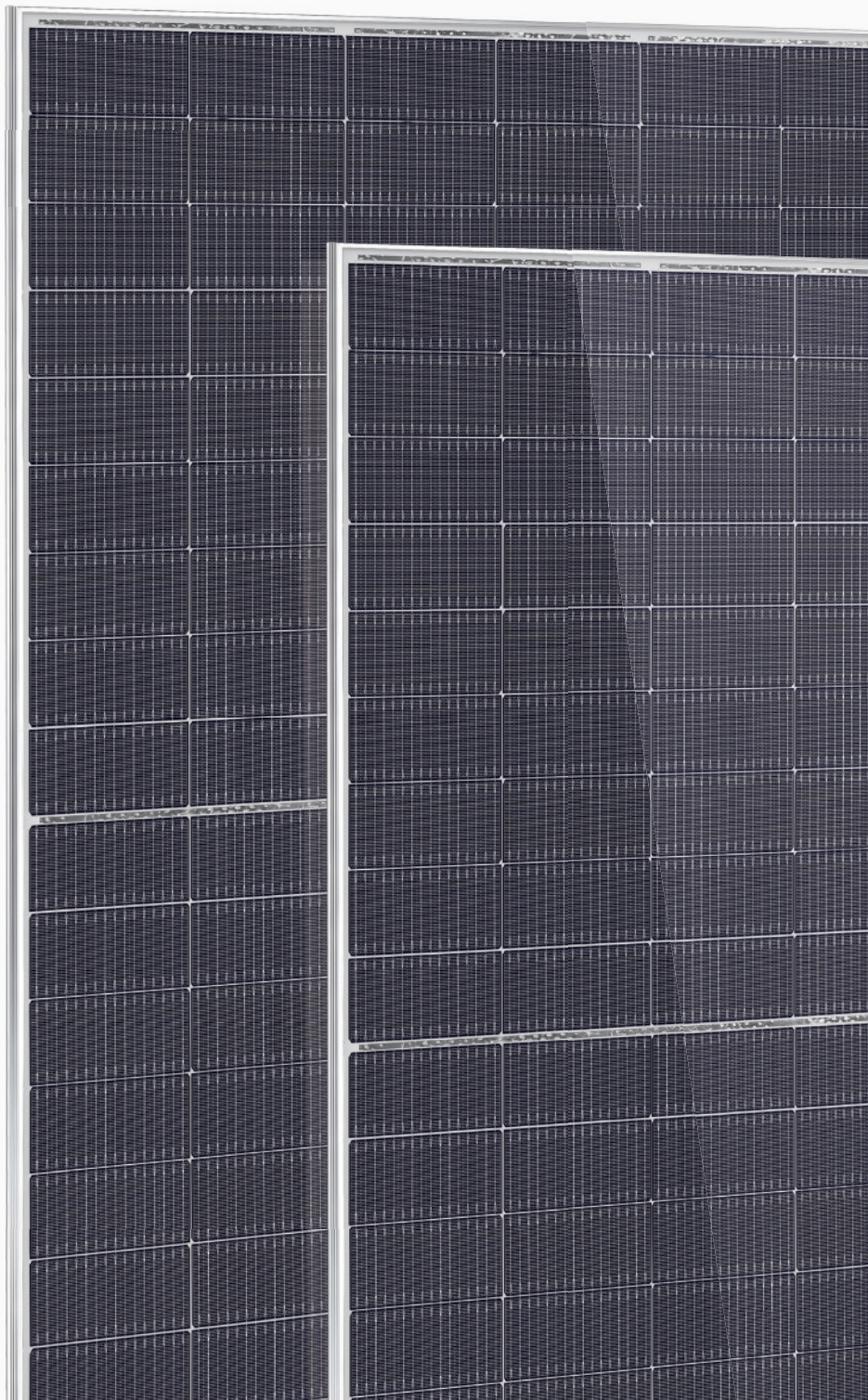
**12years** Material & process Warranty

**25years** Linear Performance Warranty

**1%** Linear Power Degradation in the First Year

**0.4%** Linear Power Degradation Every Year

**PRODUCT QUALITY SYSTEM & CERTIFICATION**



## ELECTRICAL PROPERTIES

**JU-182T-54H 108PCS**

**STC** : irradiance, 1000W/m<sup>2</sup>; cell temperature, 25°C; spectral range, AM1.5

**NOCT**: irradiance, 800 W/m<sup>2</sup>; ambient temperature, 20 °C; spectral range, AM1.5; wind speed, 1m/s

	STC	NOCT	STC	NOCT	STC	NOCT	STC	NOCT	STC	NOCT
Max power - P <sub>mp</sub> (W)	430	328.8	435	332.6	440	336.4	445	340.2	450	344.1
Open-circuit voltage - V <sub>oc</sub> (V)	34.87	33.20	35.08	33.40	35.29	33.60	35.50	33.80	35.71	33.90
Short-circuit current - I <sub>sc</sub> (A)	15.69	12.65	15.77	12.72	15.85	12.78	15.93	12.84	16.01	12.91
Max operating voltage - V <sub>mp</sub> (V)	28.61	27.30	28.79	27.50	28.97	27.70	29.14	27.80	29.32	28.00
Max operating current - I <sub>mp</sub> (A)	15.03	12.04	15.11	12.10	15.19	12.16	15.27	12.23	15.35	12.29
Module conversion efficiency - η <sub>m</sub>	21.5%		21.8%		22%		22.3%		22.5%	
Power tolerance (W)	(0, +5)									
Mechanical load	Front5400Pa/Back2400Pa									
Max system voltage (V)	1500									
Max series fuse rating (A)	25									
Operating temperature	-40~+85°C									

## STRUCTURAL CHARACTERISTICS

Module dimensions(L*W*H)	1722 x 1134 x 30mm
Weight	21kg
Cell quantity	108PCS
Cell model	TOPCon Monocrystalline182 x 91mm
Glass	3.2mm AR, High Transmission, Tempered Glass
Frame	Anodized aluminium alloy
Junction box	IP68 Rated
Output line	4.0mm <sup>2</sup> , wire length 300mm
Connector	MC4 Compatible

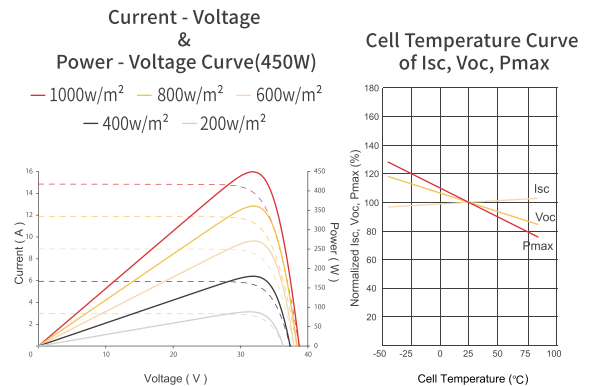
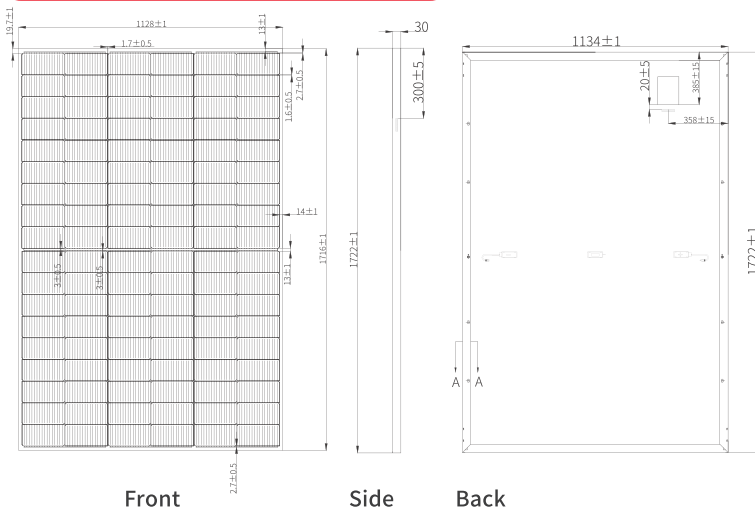
## TEMPERATURE CHARACTERISTIC

Temperature coefficient (P <sub>max</sub> )	-0.29% / °C
Temperature coefficient (V <sub>oc</sub> )	-0.25% / °C
Temperature coefficient (I <sub>sc</sub> )	+0.046% / °C
NMOT	42±2°C

## PACKAGING

Container	40HQ
PCS / Pallet	36
PCS / Container	936

## PRODUCT ASSEMBLY DRAWING(mm)



[www.jinenusolar.com](http://www.jinenusolar.com)

[jingyou@jinenusolar.com](mailto:jingyou@jinenusolar.com)

0086-400-888-3165