

「 182mm mono TOPCon half-cell, high-efficiency monofacial module 」

**565-585W** 0-5W Positive Tolerance



**MBB&SMBB Half-cut Cell Technology**

New circuit design, lower internal current, and lower Rs loss.



**High Power Density**

A new generation of monocrystalline products with reduced resistive losses for greater power output.



**Mechanical Properties**

An aluminum frame in special design for better mechanical properties and more efficient installation.



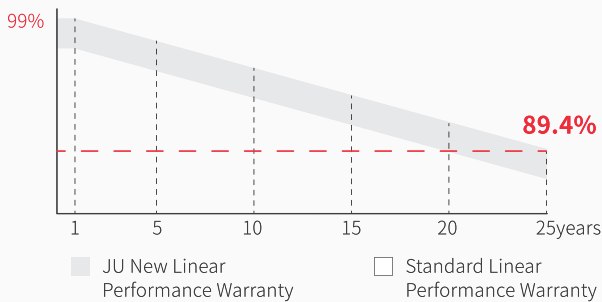
**Excellent Weather Resistance**

The solar modules can meet the IEC standard requirements with strong resistant to risks such as salt spray, ammonia gas, dust, snail marks and electric potential induced attenuation.



**4 Times 100% EL Detection**

Guarantee no micro cracks



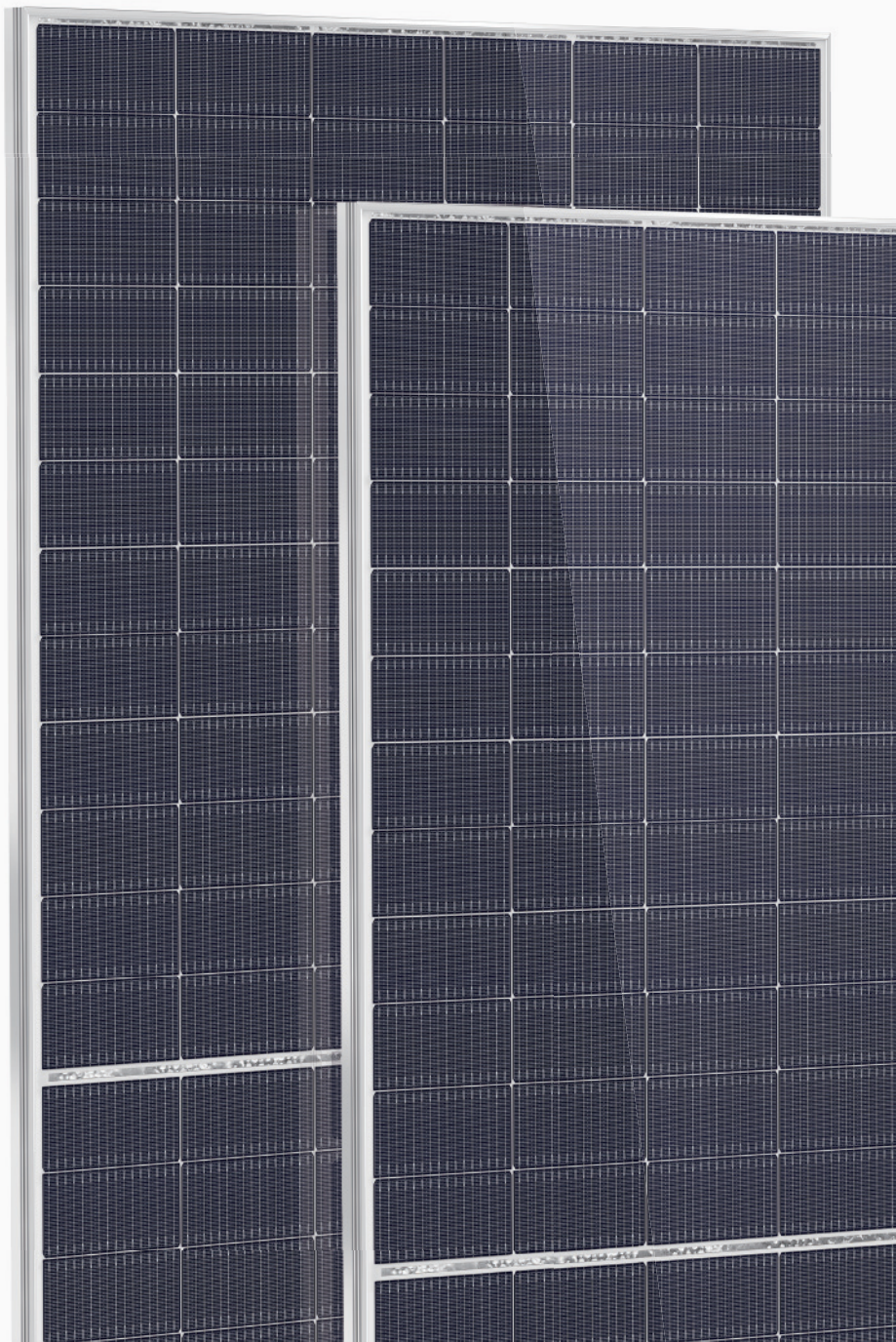
**12years** Material & process Warranty

**25years** Linear Performance Warranty

**1%** Linear Power Degradation in the First Year

**0.4%** Linear Power Degradation Every Year

**PRODUCT QUALITY SYSTEM & CERTIFICATION**



## ELECTRICAL PROPERTIES

**JU-182T-72H 144PCS**

**STC** : irradiance, 1000W/m<sup>2</sup>; cell temperature, 25°C; spectral range, AM1.5

**NOCT**: irradiance, 800 W/m<sup>2</sup>; ambient temperature, 20 °C; spectral range, AM1.5; wind speed, 1m/s

	STC	NOCT	STC	NOCT	STC	NOCT	STC	NOCT	STC	NOCT
Maximum power - P <sub>mp</sub> (W)	565	425	570	429	575	432	580	436	585	440
Open-circuit voltage - V <sub>oc</sub> (V)	50.87	48.32	51.07	48.51	51.27	48.70	51.47	48.89	51.67	49.08
Short-circuit current - I <sub>sc</sub> (A)	14.19	11.46	14.25	11.50	14.31	11.55	14.37	11.60	14.43	11.65
Maximum operating voltage - V <sub>mp</sub> (V)	42.14	39.52	42.29	39.65	42.44	39.78	42.59	39.87	42.74	40.04
Maximum operating current - I <sub>mp</sub> (A)	13.41	10.75	13.48	10.81	13.55	10.87	13.62	10.94	13.69	10.98
Module conversion efficiency - η <sub>m</sub>	21.86%		22.06%		22.25%		22.44%		22.64%	
Power tolerance (W)	(0, +5)									
Mechanical load	Front5400Pa/Back2400Pa									
Maximum system voltage (V)	1500									
Maximum series fuse rating (A)	25									
Operating temperature	-40~+85°C									

## STRUCTURAL CHARACTERISTICS

Module dimensions(L*W*H)	2279 x 1134 x 35mm
Weight	28.9kg
Cell quantity	144PCS
Cell model	TOPCon Monocrystalline182 x 91mm
Glass	3.2mm AR, High Transmission, Tempered Glass
Frame	Anodized aluminium alloy
Junction box	IP68 Rated
Output line	4.0mm <sup>2</sup> , wire length 300mm
Connector	MC4 Compatible

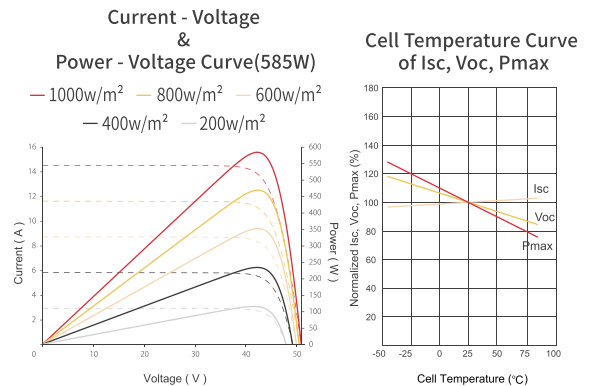
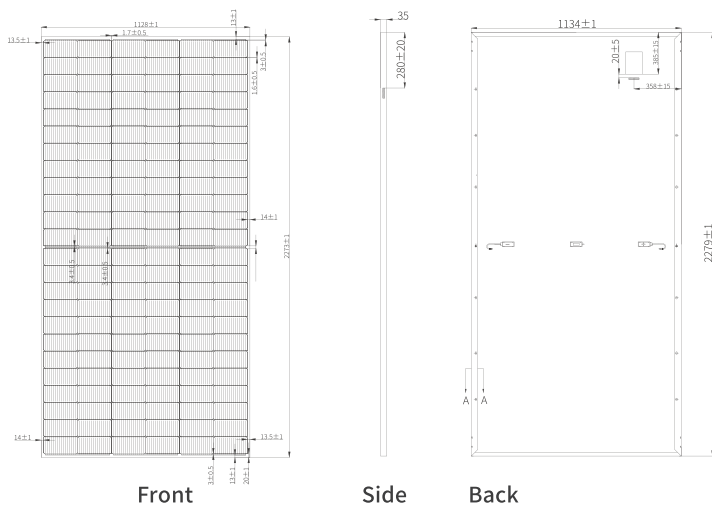
## TEMPERATURE CHARACTERISTIC

Temperature coefficient (P <sub>max</sub> )	-0.30% / °C
Temperature coefficient (V <sub>oc</sub> )	-0.25% / °C
Temperature coefficient (I <sub>sc</sub> )	+0.046% / °C
NMOT	43±2°C

## PACKAGING

Container	40HQ
PCS / Pallet	31
PCS / Container	620

## PRODUCT ASSEMBLY DRAWING(mm)



**20GW ODM|OEM Solar Customization**



[www.jinenusolar.com](http://www.jinenusolar.com)



[jingyou@jinenusolar.com](mailto:jingyou@jinenusolar.com)



0086-400-888-3165



Zibo JinenU Solar Technology Co., LTD  
3005, Silk Road, Zhoucun District, Zibo,  
Shandong, China

Taizhou JinenU New Energy Co., LTD  
568, Taizhou Road, Jiangyan District, Taizhou,  
Jiangsu, China

Tai'an JinenU Solar Co., LTD  
58 Zhongtianmen Street, High-tech Zone, Tai'an,  
Shandong, China